



the **play inspection** company

Annual Inspection

Wexham Court Parish Council

Norway Drive Recreation Ground

Norway Drive, Slough, SL2 5QW



API Associate



Unit 5, Glenmore Business Park, Blackhill Road, Poole, Dorset, BH16 6NL
t- 01202 590675 e- info@playinspections.co.uk

[www. playinspections .co.uk](http://www.playinspections.co.uk)

Inspection Scope for RPII Inspection Methodology

This document outlines the RPII scope for inspections undertaken by the Inspectors listed as Annual Inspectors on the RPII Register of Inspectors when undertaking Indoor Annual, Outdoor Annual, Outdoor Operational and Outdoor Routine inspections.

Inspections are undertaken with reference to the standards listed in this preamble only; where no date for the standard is given it will be the standard that is current at the time of inspection except where overlap periods are granted by the standards committee when standards are updated. The information contained in reports is provided to assist the owner/operator in fulfilling their responsibilities as detailed in the relevant standard. Other standards referenced within the listed standards do not form part of the inspection, unless they are also explicitly listed here.

The following standards are relevant to all installations of equipment that are publicly accessible to users; this includes public parks, pay and play parks, schools, nurseries, public houses, holiday parks, indoor play centres, farm parks etc. All equipment used or employed in publicly accessible areas should meet with the requirements of the relevant standards (listed below):

BS EN 1176 Parts 1, 2, 3, 4, 5, 6, 10 & 11 Playground equipment intended for permanent installation outdoors & indoors.

BS EN 1176 Part 7 - 'Guidance on Installation, Inspection, Maintenance and Operation' (this document gives guidance to the owners/operators of the facility on the installation, inspection, maintenance and operation of playground equipment, excluding ancillary items).

In the United Kingdom the National Foreword forms an important part to the understanding and implementation of the recommendations set out in this document. It clarifies the application of the document within the UK as best practice guidance, as the document has been used since its initial publication. Therefore, in the UK this standard (BS EN 1176 – Part 7) contains no requirements and needs to be read and implemented as guidance, with the use of the term 'shall' therefore becoming a recommendation, as in the term 'should'.

Domestic play equipment falls outside of the scope of BS EN 1176 and has its own standards (BS EN 71 series – Safety of Toys). Where domestic equipment can be identified this will be acknowledged in the report but any comments concerning compliance will follow the requirements and recommendations of BS EN 1176.

When water play items, including spray parks, are inspected any comments concerning compliance within the inspection will refer to BS EN 1176. We have not assessed these against the requirements of BS EN 17232 (Water play equipment and features).

Other equipment that is not clearly identified as unsupervised or domestic (natural play, self-build equipment etc.) will be assessed for compliance with the relevant standard listed below:

BS EN 15312 Free access multi-sports equipment
BS EN 14974 Skateparks
BS EN 16630 Permanently installed outdoor fitness equipment
BS EN 16899 Parkour equipment (plus RPII/API guidance notes)

Annual and Post Installation inspections will take into consideration compliance with these current standards, and defects related to wear and vandalism. Items not listed in the report have not been included in the inspection. The inspection will cover the playground equipment and the active area (that area which is obviously part of the playground), nominally up to three metres around, the fence line if closer, or other areas as agreed.

Operational inspections only take into consideration defects related to cleanliness, equipment ground clearances, ground surface finishes, exposed foundations, sharp edges, missing parts, excessive wear (of moving parts) structural integrity, wear and vandalism.

Routine visual inspections relate only to the most obvious defects such as broken or missing parts, litter, vandalism and issues created by severe weather conditions (the intention is to identify hazards created by storm damage).

All inspections are non-dismantling, non-destructive and do not include any structural, toxicology or impact assessments defined in the standard; however, the inspector will undertake a manual test for stability and if equipment fails under manual load, or any other hazard is identified as an unacceptable risk, the owner/operator will be notified as soon as practicably possible.

The inspector will access all reasonably accessible equipment and will assess all reasonably accessible parts above the standing surface. Where it is not possible to access parts of the equipment without employing an alternative means of access the report will record the action required by the owner/operator to ensure the continued safe use of the equipment.

Ancillary equipment will be assessed using the inspector's knowledge and experience of the standards named in this document. (Note: Ancillary items are not included in the specific equipment-type parts of the EN 1176 series; hence they are not assessed for compliance with EN 1176 series and are subject to a general safety assessment).

The owner/operator is responsible for the overall safety of the equipment and area.

The inspector will not undertake any of the following works unless specifically agreed in writing at the time of order:

Checking the depth and underlying structural integrity of any surface areas and/or carrying out any testing of the impact attenuating properties of any surfaces; the identification of any corrosion, rot or other deterioration in any apparatus or equipment other than by an external inspection; the inspection of any equipment (or part thereof) that is beneath the playing surface (loose-fill materials may be moved to expose foundations); tightening any bolts, hinges or other fixing devices on any apparatus or equipment; assessing or inspecting any electrical installations contained on any site and/or apparatus and/or equipment; assessing or inspecting any water supplies and/or water features and/or any associated computerised systems (including carrying out any programming); where planting or trees are mentioned in the report no assessments of toxicity, suitability or condition are undertaken – the owner/operator should have suitable inspections provided by a competent person.

The owner/operator should have a 'design risk assessment' provided by the manufacturer/designer of the area for the equipment and location in which the facility is installed.

The operator is responsible for managing risks of their provision and is required by law to carry out a 'suitable and sufficient assessment' of the risks associated with a site or activity. This inspection shall be considered as contributing to the operator's discharge of this responsibility.

The details contained within the report are a snapshot of the condition at the time of inspection only and subsequent events may affect the condition of the facility. Suggested remedial actions are based on the knowledge and experience of the inspector and/or that of the inspection company. The owner/operator should always seek the advice of the manufacturer or a competent person when undertaking repairs and/or modifications to equipment.

A full copy of the Play Inspection Company Ltd. Terms & Conditions is available on our website (www.playinspections.co.uk)

The operator is responsible for following the guidance of the relevant standards. The standards give guidance on the installation, inspection, maintenance and operation of the various types of facilities. The inspection guidance is listed in Table 1, with an indication of which parts will be included in an RPII Annual or Post-Installation Inspection. The relevant standards also contain additional parts which the operator should follow.

Inspection recommendations of relevant standards Refer to relevant standards for full text	Annual Main	RPII Annual/ Post Installation Inspection
6.1 d) Overall levels of safety of equipment (see note 1)	✓	✓ [1]
6.1 d) Overall levels of safety of foundations (see note 1)	✓	✓ [1]
6.1 d) Overall levels of safety of playing surfaces (see note 2)	✓	✓ [2]
6.1 d) Compliance with the relevant parts of the standard and or risk assessment (see note 3)	✓	✓ [3]
6.1 d) Effects of weather	✓	✓
6.1 d) Presence of rot, decay or corrosion (see note 1)	✓	✓ [1]
6.1 d) Assessment of repairs made or added or replaced components (see note 4)	✓	✓ [4]
6.1 d) Excavation or dismantling/additional measures	✓	✗
6.2.1 Assessment of glass reinforced plastics (see note 5)	✓	✓ [5]
6.2.1 Inspection of one post equipment (see note 1)	✓	✓ [1]
6.2.4 Undertaking the Operators inspection protocol	✓	✗

NB: The clause numbers in table 1 are taken from BS EN 1176 - Part 7:2020. The content is equally applicable to all other relevant standards listed herein. Playgrounds contain a range of equipment from different manufacturers and installed over a number of years; operators should implement any guidance provided by the manufacturer. Item specific detail is not readily available to RPII Playground Inspectors, whose report contributes to the operator's overall Annual Main Inspection as detailed in the relevant standards.

[1] A manual test only is undertaken for stability. Wear and instability are only detectable where readily apparent without dismantling or destruction and without the use of tools, excavation or specialist equipment. Rot and corrosion are tested or with a hammer and/or steel rod. Decay in timber may exist which can only be found with specialist equipment.

[2] Only the visible condition and dimensional compliance of surface extent is considered. Neither testing of impact attenuating properties nor measurement of the thickness of bound surfaces are undertaken on RPII annual inspections.

[3] The inspection assesses compliance where this can be tested on site using manual methods without dismantling, destruction and without the use of tools or specialist equipment.

[4] The operator should use manufacturer's recommended parts, or equivalent. We are unable to verify if such parts have been used, and any subsequent change in quality or performance.

[5] Visible glass fibres will be noted in reports. The operator is responsible for repairs or replacement.

Risk Assessment Matrix

			Scores in the report are multiplication factors of Likelihood x Severity					
			Severity>>					
Likelihood	Very High probability, if the situation is not addressed an accident is almost certain.	5	Very High	VL (5)	L (10)	M (15)	H (20)	VH (25)
	High probability an accident is probable without any added factor.	4	High	VL (4)	L (8)	M (12)	H (16)	H (20)
	Moderate probability an incident is foreseeable.	3	Moderate	VL (3)	L (6)	L (9)	M (12)	M (15)
	Some probability, requires a combination of factors to take place.	2	Low	VL (2)	VL (4)	L (6)	L (8)	L (10)
	No significant probability; lightning strike, freak accident.	1	Very Low	VL (1)	VL (2)	VL (3)	VL (4)	VL (5)
			Very Low	Low	Moderate	High	Very High	
			1	2	3	4	5	
			No injury likely e.g. damaged or soiled clothing, minor bruising, grazes	Minor injury, laceration or bruising requiring first aid only	Injury requiring medical intervention e.g. cuts requiring stitches	Serious injury including concussions or fracture of long bones	Severe injury involving a potential life changing injury or fatality	
			Severity>>					
<p>Note 1: The total risk scores included within our reports are a multiplication factor of the calculated Likelihood and Severity of each finding. Both Likelihood and Severity are given a number between 1 - 5 as shown on the matrix above and these two numbers are then multiplied together to give the total risk score that is shown against defects on the report. Total risk scores can be divided in both directions, i.e. a total risk score of 12 could be a Likelihood (3) x Severity (4) or Likelihood (4) x Severity (3).</p> <p>Note 2: When we inspect we only see a snapshot of the current condition of the equipment. It is the operators responsibility to ensure that there is a continuing level of maintenance to keep the equipment in good working order and the site fit for use.</p>								

Equipment has been assessed to the following standards where relevant:

- BS EN 1176 Parts 1-11 (Playground equipment and surfacing)
- BS EN 14974 (Facilities for users of roller sports equipment)
- BS EN 15312 (Free access multi-sports equipment)
- BS EN 16899 (Parkour Equipment)
- BS EN 16630 (Outdoor Fitness Equipment).



Norway Drive Recreation Ground

Inspection Ref: 2435245

Site Ref: 110251

Inspected: 1-August-2024 - 13:12 by Garrick O'Connor (RPII Annual Inspector)

Risk Assessment: 10 Low Risk



Location:

The site is located in an area of public open space and is not directly overlooked by any properties in the local community.

Disabled Access:

Some accessible features; an area that presents difficulties to the majority of people with disabilities but in favourable circumstances and certainly in partnership can be accessed.

i 8 - Low Risk

Item: Site General
Manufacturer: Owner/Operator
Surface Type: N/A
Item Quantity: 1
Equipment Compliance: N/A
Surface Area Compliance: N/A

Total Findings: 1



Finding 1

Unauthorised general waste has been left on site - Arrange removal of waste from site

i 8 - Low Risk

Item: Gate - Self Closing
Manufacturer: Not Identified
Surface Type: Paving Slabs
Item Quantity: 1
Equipment Compliance: N/A
Surface Area Compliance: N/A

Total Findings: 1



Finding 1

The area under the gate has eroded leaving uneven areas, or the concrete foundations exposed, resulting in trip hazards at the entrance/exit to the playground - Reinstate to level with surrounding surfaces

i 6 - Low Risk

Item: Fence
Manufacturer: Not Identified
Surface Type: Grass
Item Quantity: 1
Equipment Compliance: N/A
Surface Area Compliance: N/A



Total Findings: 1

Finding 1

There are a number of timber slats missing from the fence - Replace missing slats

i 4 - Very Low Risk

Item: Sign
Manufacturer: Not Identified
Surface Type: N/A
Item Quantity: 1
Equipment Compliance: N/A
Surface Area Compliance: N/A



Total Findings: 1

Finding 1

This item is satisfactory - no work required -

i 8 - Low Risk

Item: Fence - Steel Mesh
Manufacturer: Not Identified
Surface Type: Grass
Item Quantity: 1
Equipment Compliance: N/A
Surface Area Compliance: N/A



Total Findings: 1

Finding 1

The surface has eroded and the foundations are exposed - Reinstate surrounding surfaces to cover the foundations

i 8 - Low Risk

Item: Litter Bin
Manufacturer: Freenotes
Surface Type: Grass
Item Quantity: 1
Equipment Compliance: N/A
Surface Area Compliance: N/A



Total Findings: 1

Finding 1

The bin is not securely fixed to the surface and there is some possibility of the item tipping or rolling over - Secure the bin to the ground

i 10 - Low Risk

Item: 1 Bay Swing
Manufacturer: Kompan Ltd
Surface Type: Grass Matrix Tiles
Item Quantity: 1
Equipment Compliance: No
Surface Area Compliance: Yes

Total Findings: 10



Finding 1

The grass mats are silted up and the soil is compacted; this may have an effect on the impact absorbing properties of the surface. Consideration should be given to HIC testing the surface to verify impact attenuating properties (<https://playinspections.co.uk/inspection-services/safety-surface-testing/>) - Contact our office for a quotation for this service

Finding 2

There are gaps opening between the grass mat tiles - Provide additional ties or secure / reinstate surface

Finding 3

There is some strimmer / machinery damage apparent on the posts, this can penetrate the preservative applied to the timber and accelerate the rotting process - Monitor for any deterioration (rot) and replace as required

Finding 4

The bushes are showing signs of wear - Monitor for any further deterioration and replace as required

Finding 5

There is some evidence of fire damage to the item - Monitor for any further deterioration and repair as required

Finding 6

The ropes on this item have been taped and we are unable to fully assess the condition of the rope, ensure no wire strands are broken beneath the tape - Repair or replace as required

Finding 7

The connecting links are in excess of 8.6mm and less than 12mm and fail the requirements of BS EN 1176 Part 1; clause 4.2.13, Chains - Monitor - No remedial work recommended

Finding 8

A number of fixing(s) have worked loose - Secure all loose fixings

Finding 9

The swivel joint fixings are very loose - Retighten fixings

Finding 10

There is some notable evidence of chain wear - Monitor for any further deterioration and replace when 40% worn

i 10 - Low Risk

Item: Activity Platforms
Manufacturer: Kompan Ltd
Surface Type: Grass Matrix Tiles
Item Quantity: 1
Equipment Compliance: Yes
Surface Area Compliance: Yes



Total Findings: 6

Finding 1

There are a number of dents in the slide surface - Monitor for any further deterioration and repair as required

Finding 2

The ropes/nets are worn/damaged in places - Monitor for any further deterioration and repair or replace as required

Finding 3

There is some graffiti present - Remove the graffiti

Finding 4

A number of fixing(s) have worked loose - Secure all loose fixings

Finding 5

There are very large cavities within the posts - Refer to manufacturer

Finding 6

Parts of the timber are rough or splintered - Remove all rough or sharp edges

i 8 - Low Risk

Item: Four Way Springer
Manufacturer: Kompan Ltd
Surface Type: Grass Matrix Tiles
Item Quantity: 1
Equipment Compliance: Yes
Surface Area Compliance: Yes



Total Findings: 1

Finding 1

The grass mats are silted up, the soil is compacted and the area will become very slippery when the soil is wet. - Reinstate as required

i 6 - Low Risk

Item: Spinner
Manufacturer: Kompan Ltd
Surface Type: Grass Matrix Tiles
Item Quantity: 1
Equipment Compliance: Yes
Surface Area Compliance: Yes



Total Findings: 2

Finding 1

A number of fixing(s) have worked loose - Secure all loose fixings

Finding 2

There is/are inserts missing - Replace missing inserts

i 10 - Low Risk

Item: Activity Platforms
Manufacturer: Kompan Ltd
Surface Type: Grass Matrix Tiles
Item Quantity: 1
Equipment Compliance: N/A
Surface Area Compliance: N/A



Total Findings: 9

Finding 1

A number of fixing(s) have worked loose - Secure all loose fixings

Finding 2

They are very large cavities within the posts - Refer to manufacturer

Finding 3

The rope ladder fixings have sheared - Reinstall the component

Finding 4

There is/are bolt cap covers missing or damaged on the item - Replace missing or damaged bolt cap covers

Finding 5

There are splits running through the timber that cross through or near fixing points and may cause instability in the future - Monitor stability of fixings

Finding 6

A number of fixing(s) have worked loose - Secure all loose fixings

Finding 7

There is/are bolt cap covers missing or damaged on the item - Replace missing or damaged bolt cap covers

Finding 8

Parts of the timber are rough or splintered - Remove all rough or sharp edges

Finding 9

There is some evidence of rot in the timber - Monitor for any further deterioration and replace as required



i 8 - Low Risk

Item: 1 Bay 2 Seat (Flat)
Manufacturer: Kompan Ltd
Surface Type: Grass Matrix Tiles
Item Quantity: 1
Equipment Compliance: Yes
Surface Area Compliance: Yes



Total Findings: 5

Finding 1

The seat(s) and suspension were missing at the time of inspection and the inspector was unable to make a full compliance assessment - Replace missing seat(s) and suspension

Finding 2

The grass mats are silted up and the soil is compacted; this may have an effect on the impact absorbing properties of the surface. Consideration should be given to HIC testing the surface to verify impact attenuating properties (<https://playinspections.co.uk/inspection-services/safety-surface-testing/>) - Contact our office for a quotation for this service

Finding 3

A number of fixing(s) have worked loose - Secure all loose fixings

Finding 4

The timber has a number of splits/shakes or air cracks and this may affect the stability or allow water ingress which will accelerate the rotting process - Monitor to ensure the splits do not cross through fixing points of the structure and/or cause any instability

Finding 5

There is some strimmer / machinery damage apparent on the posts, this can penetrate the preservative applied to the timber and accelerate the rotting process - Monitor for any deterioration (rot) and replace as required

i 10 - Low Risk

Item: Tennis Court
Manufacturer: Not Identified
Surface Type: Tarmac
Item Quantity: 1
Equipment Compliance: No
Surface Area Compliance: N/A



Total Findings: 11

Finding 1

A clearly visible facility sign should be provided in a prominent position with the wording as detailed BS EN 15312- the equipment is not intended for children less than 3 years old- the warning - Do not climb on the framework or nets- the warning - Do not hang on the ring (if provided)- the warning - Do not wear rings or other jewellery- name and telephone number of the administrator- number to call in case of accident - Provide signage to BS EN 15312

Finding 2

BS EN 15312 states that gaps whose dimensions change during use shall have a minimum dimension of 18mm - Ensure crushing hazards are removed

Finding 3

The gate has no drop bolt sleeves and/or drop bolts fitted - Provide drop bolt sleeves and/or drop bolts

Finding 4

There are projecting bolt thread(s) present - Remove excess thread length and deburr or provide cap

Finding 5

A number of fixing(s) have worked loose - Secure all loose fixings

Finding 6

The paintwork on this item has been damaged or worn exposing the metal underneath which is rusting / corroding - Treat affected areas and repaint

Finding 7

There is weed / vegetation growth on, between, or around the edges of the surfacing - Remove weed / vegetation growth

Finding 8

There is or are fixings missing on the item - Replace all missing fixings

Finding 9

The adjacent foliage is overhanging - Cut back and maintain

Finding 10

There is/are finger entrapments in the panelling and the item fails to meet the requirements of BS EN 15312 Clause 4.4.2.2 Entrapment of fingers - Monitor - No remedial work recommended

Finding 11

The net has some minor damage - Monitor for any further deterioration and replace as required



i 8 - Low Risk

Item: Bench
Manufacturer: Not Identified
Surface Type: Tarmac
Item Quantity: 1
Equipment Compliance: N/A
Surface Area Compliance: N/A



Total Findings: 2

Finding 1

There are projecting bolt thread(s) present - Remove excess thread length and deburr or provide cap

Finding 2

The timber stain is in poor condition - Prepare all affected parts and re-stain with an appropriate preservative

i 6 - Low Risk

Item: Litter Bin
Manufacturer: Not Identified
Surface Type: Grass
Item Quantity: 3
Equipment Compliance: N/A
Surface Area Compliance: N/A



Total Findings: 1

Finding 1

The paintwork on this item has been damaged or worn exposing the metal underneath which is rusting / corroding - Treat affected areas and repaint

Findings information

i 8 - Low Risk (Finding 1)

Item: Ancillary Items - Site General
Manufacturer: Owner/Operator

Risk Level: L - Low Risk
Surface: N/A



Finding: Unauthorised general waste has been left on site **Action:** Arrange removal of waste from site

i 8 - Low Risk (Finding 1)

Item: Gates - Gate - Self Closing
Manufacturer: Not Identified

Risk Level: L - Low Risk
Surface: Paving Slabs



Finding: The area under the gate has eroded leaving uneven areas, or the concrete foundations exposed, resulting in trip hazards at the entrance/exit to the playground

Action: Reinststate to level with surrounding surfaces

i 6 - Low Risk (Finding 1)

Item: Fences - Fence
Manufacturer: Not Identified

Risk Level: L - Low Risk
Surface: Grass



Finding: There are a number of timber slats missing from the fence

Action: Replace missing slats

i 8 - Low Risk (Finding 1)

Item: Fences - Fence - Steel Mesh
Manufacturer: Not Identified

Risk Level: L - Low Risk
Surface: Grass



Finding: The surface has eroded and the foundations are exposed

Action: Reinststate surrounding surfaces to cover the foundations

i 8 - Low Risk (Finding 1)

Item: Ancillary Items - Litter Bin
Manufacturer: Freenotes

Risk Level: L - Low Risk
Surface: Grass



Finding: The bin is not securely fixed to the surface and there is some possibility of the item tipping or rolling over

Action: Secure the bin to the ground

i 8 - Low Risk (Finding 1)

Item: Swings - 1 Bay Swing
Manufacturer: Kompan Ltd

Risk Level: L - Low Risk
Surface: Grass Matrix Tiles



Finding: The grass mats are silted up and the soil is compacted; this may have an effect on the impact absorbing properties of the surface. Consideration should be given to HIC testing the surface to verify impact attenuating properties (<https://playinspections.co.uk/inspection-services/safety-surface-testing/>)

Action: Contact our office for a quotation for this service

i 6 - Low Risk (Finding 2)

Item: Swings - 1 Bay Swing
Manufacturer: Kompan Ltd

Risk Level: L - Low Risk
Surface: Grass Matrix Tiles



Finding: There are gaps opening between the grass mat tiles

Action: Provide additional ties or secure / reinstate surface

i 6 - Low Risk (Finding 3)

Item: Swings - 1 Bay Swing
Manufacturer: Kompan Ltd

Risk Level: L - Low Risk
Surface: Grass Matrix Tiles



Finding: There is some strimmer / machinery damage apparent on the posts, this can penetrate the preservative applied to the timber and accelerate the rotting process

Action: Monitor for any deterioration (rot) and replace as required

i 4 - Very Low Risk (Finding 4)

Item: Swings - 1 Bay Swing
Manufacturer: Kompan Ltd

Risk Level: V - Very Low Risk
Surface: Grass Matrix Tiles



Finding: The bushes are showing signs of wear

Action: Monitor for any further deterioration and replace as required

i 6 - Low Risk (Finding 5)

Item: Swings - 1 Bay Swing
Manufacturer: Kompan Ltd

Risk Level: L - Low Risk
Surface: Grass Matrix Tiles



Finding: There is some evidence of fire damage to the item **Action:** Monitor for any further deterioration and repair as required

i 0 - Risk Assessment not Undertaken (Finding 6)

Item: Swings - 1 Bay Swing
Manufacturer: Kompan Ltd

Risk Level: N - Risk Assessment not Undertaken
Surface: Grass Matrix Tiles



Finding: The ropes on this item have been taped and we are unable to fully assess the condition of the rope, ensure no wire strands are broken beneath the tape

Action: Repair or replace as required

i 5 - Very Low Risk (Finding 7)

Item: Swings - 1 Bay Swing
Manufacturer: Kompan Ltd

Risk Level: V - Very Low Risk
Surface: Grass Matrix Tiles



Finding: The connecting links are in excess of 8.6mm and less than 12mm and fail the requirements of BS EN 1176 Part 1; clause 4.2.13, Chains

Action: Monitor - No remedial work recommended

i 6 - Low Risk (Finding 8)

Item: Swings - 1 Bay Swing
Manufacturer: Kompan Ltd

Risk Level: L - Low Risk
Surface: Grass Matrix Tiles



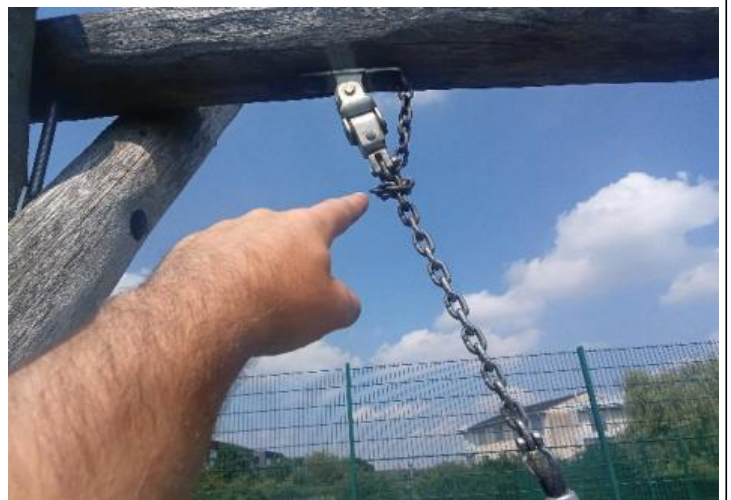
Finding: A number of fixing(s) have worked loose

Action: Secure all loose fixings

i 10 - Low Risk (Finding 9)

Item: Swings - 1 Bay Swing
Manufacturer: Kompan Ltd

Risk Level: L - Low Risk
Surface: Grass Matrix Tiles



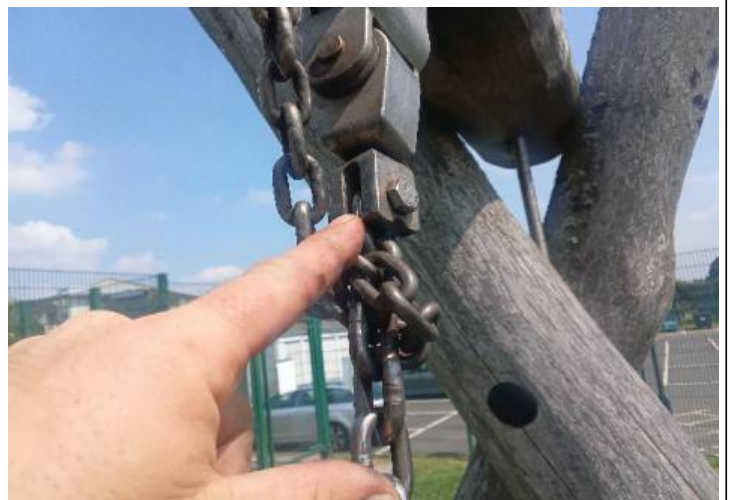
Finding: The swivel joint fixings are very loose

Action: Retighten fixings

i 6 - Low Risk (Finding 10)

Item: Swings - 1 Bay Swing
Manufacturer: Kompan Ltd

Risk Level: L - Low Risk
Surface: Grass Matrix Tiles



Finding: There is some notable evidence of chain wear

Action: Monitor for any further deterioration and replace when 40% worn

i 4 - Very Low Risk (Finding 1)

Item: Activity Equipment - Activity Platforms
Manufacturer: Kompan Ltd

Risk Level: V - Very Low Risk
Surface: Grass Matrix Tiles



Finding: There are a number of dents in the slide surface

Action: Monitor for any further deterioration and repair as required

i 6 - Low Risk (Finding 2)

Item: Activity Equipment - Activity Platforms
Manufacturer: Kompan Ltd

Risk Level: L - Low Risk
Surface: Grass Matrix Tiles



Finding: The ropes/nets are worn/damaged in places

Action: Monitor for any further deterioration and repair or replace as required

i 0 - Risk Assessment not Undertaken (Finding 3)

Item: Activity Equipment - Activity Platforms
Manufacturer: Kompan Ltd

Risk Level: N - Risk Assessment not Undertaken
Surface: Grass Matrix Tiles



Finding: There is some graffiti present

Action: Remove the graffiti

i 6 - Low Risk (Finding 4)

Item: Activity Equipment - Activity Platforms
Manufacturer: Kompan Ltd

Risk Level: L - Low Risk
Surface: Grass Matrix Tiles



Finding: A number of fixing(s) have worked loose

Action: Secure all loose fixings

i 10 - Low Risk (Finding 5)

Item: Activity Equipment - Activity Platforms
Manufacturer: Kompan Ltd

Risk Level: L - Low Risk
Surface: Grass Matrix Tiles



Finding: There are very large cavities within the posts

Action: Refer to manufacturer

i 6 - Low Risk (Finding 6)

Item: Activity Equipment - Activity Platforms
Manufacturer: Kompan Ltd

Risk Level: L - Low Risk
Surface: Grass Matrix Tiles



Finding: Parts of the timber are rough or splintered

Action: Remove all rough or sharp edges

i 8 - Low Risk (Finding 1)

Item: Rocking Equipment - Four Way Springer
Manufacturer: Kompan Ltd

Risk Level: L - Low Risk
Surface: Grass Matrix Tiles



Finding: The grass mats are silted up, the soil is compacted and the area will become very slippery when the soil is wet. **Action:** Reinstate as required

i 6 - Low Risk (Finding 1)

Item: Rotor Play - Spinner
Manufacturer: Kompan Ltd

Risk Level: L - Low Risk
Surface: Grass Matrix Tiles



Finding: A number of fixing(s) have worked loose

Action: Secure all loose fixings

i 4 - Very Low Risk (Finding 2)

Item: Rotor Play - Spinner
Manufacturer: Kompan Ltd

Risk Level: V - Very Low Risk
Surface: Grass Matrix Tiles



Finding: There is/are inserts missing

Action: Replace missing inserts

i 6 - Low Risk (Finding 1)

Item: Activity Equipment - Activity Platforms
Manufacturer: Kompan Ltd

Risk Level: L - Low Risk
Surface: Grass Matrix Tiles



Finding: A number of fixing(s) have worked loose

Action: Secure all loose fixings

i 10 - Low Risk (Finding 2)

Item: Activity Equipment - Activity Platforms
Manufacturer: Kompan Ltd

Risk Level: L - Low Risk
Surface: Grass Matrix Tiles



Finding: They are very large cavities within the posts

Action: Refer to manufacturer

i 8 - Low Risk (Finding 3)

Item: Activity Equipment - Activity Platforms
Manufacturer: Kompan Ltd

Risk Level: L - Low Risk
Surface: Grass Matrix Tiles



Finding: The rope ladder fixings have sheared

Action: Reinstall the component

i 4 - Very Low Risk (Finding 4)

Item: Activity Equipment - Activity Platforms
Manufacturer: Kompan Ltd

Risk Level: V - Very Low Risk
Surface: Grass Matrix Tiles



Finding: There is/are bolt cap covers missing or damaged on the item

Action: Replace missing or damaged bolt cap covers

i 8 - Low Risk (Finding 5)

Item: Activity Equipment - Activity Platforms
Manufacturer: Kompan Ltd

Risk Level: L - Low Risk
Surface: Grass Matrix Tiles



Finding: There are splits running through the timber that cross through or near fixing points and may cause instability in the future

Action: Monitor stability of fixings

i 6 - Low Risk (Finding 6)

Item: Activity Equipment - Activity Platforms
Manufacturer: Kompan Ltd

Risk Level: L - Low Risk
Surface: Grass Matrix Tiles



Finding: A number of fixing(s) have worked loose

Action: Secure all loose fixings

i 4 - Very Low Risk (Finding 7)

Item: Activity Equipment - Activity Platforms
Manufacturer: Kompan Ltd

Risk Level: V - Very Low Risk
Surface: Grass Matrix Tiles



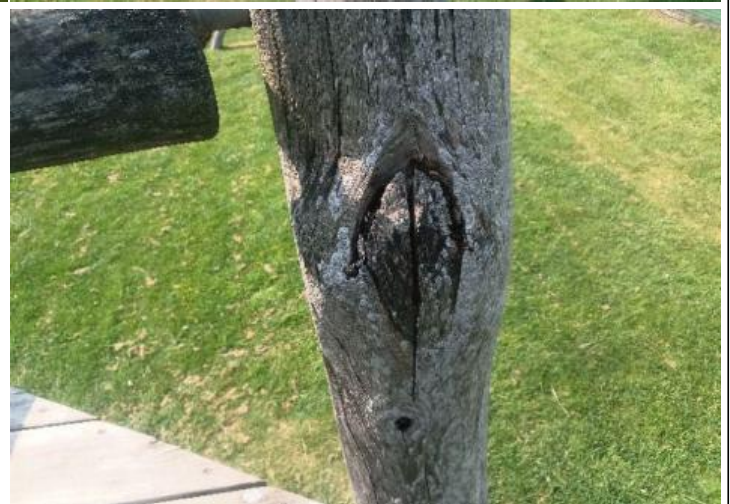
Finding: There is/are bolt cap covers missing or damaged on the item

Action: Replace missing or damaged bolt cap covers

i 6 - Low Risk (Finding 8)

Item: Activity Equipment - Activity Platforms
Manufacturer: Kompan Ltd

Risk Level: L - Low Risk
Surface: Grass Matrix Tiles



Finding: Parts of the timber are rough or splintered

Action: Remove all rough or sharp edges

i 6 - Low Risk (Finding 9)

Item: Activity Equipment - Activity Platforms
Manufacturer: Kompan Ltd

Risk Level: L - Low Risk
Surface: Grass Matrix Tiles



Finding: There is some evidence of rot in the timber

Action: Monitor for any further deterioration and replace as required

i 0 - Risk Assessment not Undertaken (Finding 1)

Item: Swings - 1 Bay 2 Seat (Flat)
Manufacturer: Kompan Ltd

Risk Level: N - Risk Assessment not Undertaken
Surface: Grass Matrix Tiles



Finding: The seat(s) and suspension were missing at the time of inspection and the inspector was unable to make a full compliance assessment

Action: Replace missing seat(s) and suspension

i 8 - Low Risk (Finding 2)

Item: Swings - 1 Bay 2 Seat (Flat)
Manufacturer: Kompan Ltd

Risk Level: L - Low Risk
Surface: Grass Matrix Tiles



Finding: The grass mats are silted up and the soil is compacted; this may have an effect on the impact absorbing properties of the surface. Consideration should be given to HIC testing the surface to verify impact attenuating properties (<https://playinspections.co.uk/inspection-services/safety-surface-testing/>)

Action: Contact our office for a quotation for this service

i 6 - Low Risk (Finding 3)

Item: Swings - 1 Bay 2 Seat (Flat)
Manufacturer: Kompan Ltd

Risk Level: L - Low Risk
Surface: Grass Matrix Tiles



Finding: A number of fixing(s) have worked loose

Action: Secure all loose fixings

i 6 - Low Risk (Finding 4)

Item: Swings - 1 Bay 2 Seat (Flat)
Manufacturer: Kompan Ltd

Risk Level: L - Low Risk
Surface: Grass Matrix Tiles



Finding: The timber has a number of splits/shakes or air cracks and this may affect the stability or allow water ingress which will accelerate the rotting process
Action: Monitor to ensure the splits do not cross through fixing points of the structure and/or cause any instability

i 6 - Low Risk (Finding 5)

Item: Swings - 1 Bay 2 Seat (Flat)
Manufacturer: Kompan Ltd

Risk Level: L - Low Risk
Surface: Grass Matrix Tiles



Finding: There is some strimmer / machinery damage apparent on the posts, this can penetrate the preservative applied to the timber and accelerate the rotting process

Action: Monitor for any deterioration (rot) and replace as required

i 5 - Very Low Risk (Finding 1)

Item: Multi Use Games Area - Tennis Court
Manufacturer: Not Identified

Risk Level: V - Very Low Risk
Surface: Tarmac



Finding: A clearly visible facility sign should be provided in a prominent position with the wording as detailed BS EN 15312- the equipment is not intended for children less than 3 years old- the warning - Do not climb on the framework or nets- the warning - Do not hang on the ring (if provided)- the warning - Do not wear rings or other jewellery- name and telephone number of the administrator- number to call in case of accident

Action: Provide signage to BS EN 15312

i 10 - Low Risk (Finding 2)

Item: Multi Use Games Area - Tennis Court
Manufacturer: Not Identified

Risk Level: L - Low Risk
Surface: Tarmac



Finding: BS EN 15312 states that gaps whose dimensions change during use shall have a minimum dimension of 18mm

Action: Ensure crushing hazards are removed

i 6 - Low Risk (Finding 3)

Item: Multi Use Games Area - Tennis Court
Manufacturer: Not Identified

Risk Level: L - Low Risk
Surface: Tarmac



Finding: The gate has no drop bolt sleeves and/or drop bolts fitted

Action: Provide drop bolt sleeves and/or drop bolts

i 8 - Low Risk (Finding 4)

Item: Multi Use Games Area - Tennis Court
Manufacturer: Not Identified

Risk Level: L - Low Risk
Surface: Tarmac



Finding: There are projecting bolt thread(s) present

Action: Remove excess thread length and deburr or provide cap

i 6 - Low Risk (Finding 5)

Item: Multi Use Games Area - Tennis Court
Manufacturer: Not Identified

Risk Level: L - Low Risk
Surface: Tarmac



Finding: A number of fixing(s) have worked loose

Action: Secure all loose fixings

i 6 - Low Risk (Finding 6)

Item: Multi Use Games Area - Tennis Court
Manufacturer: Not Identified

Risk Level: L - Low Risk
Surface: Tarmac



Finding: The paintwork on this item has been damaged or worn exposing the metal underneath which is rusting / corroding

Action: Treat affected areas and repaint

i 6 - Low Risk (Finding 7)

Item: Multi Use Games Area - Tennis Court
Manufacturer: Not Identified

Risk Level: L - Low Risk
Surface: Tarmac



Finding: There is weed / vegetation growth on, between, or around the edges of the surfacing
Action: Remove weed / vegetation growth

i 8 - Low Risk (Finding 8)

Item: Multi Use Games Area - Tennis Court
Manufacturer: Not Identified

Risk Level: L - Low Risk
Surface: Tarmac



Finding: There is or are fixings missing on the item

Action: Replace all missing fixings

i 6 - Low Risk (Finding 9)

Item: Multi Use Games Area - Tennis Court
Manufacturer: Not Identified

Risk Level: L - Low Risk
Surface: Tarmac



Finding: The adjacent foliage is overhanging

Action: Cut back and maintain

i 5 - Very Low Risk (Finding 10)

Item: Multi Use Games Area - Tennis Court
Manufacturer: Not Identified

Risk Level: V - Very Low Risk
Surface: Tarmac



Finding: There is/are finger entrapments in the panelling and the item fails to meet the requirements of BS EN 15312 Clause 4.4.2.2 Entrapment of fingers

Action: Monitor - No remedial work recommended

i 6 - Low Risk (Finding 11)

Item: Multi Use Games Area - Tennis Court
Manufacturer: Not Identified

Risk Level: L - Low Risk
Surface: Tarmac



Finding: The net has some minor damage

Action: Monitor for any further deterioration and replace as required

i 8 - Low Risk (Finding 1)

Item: Ancillary Items - Bench
Manufacturer: Not Identified

Risk Level: L - Low Risk
Surface: Tarmac



Finding: There are projecting bolt thread(s) present

Action: Remove excess thread length and deburr or provide cap

i 6 - Low Risk (Finding 2)

Item: Ancillary Items - Bench
Manufacturer: Not Identified

Risk Level: L - Low Risk
Surface: Tarmac



Finding: The timber stain is in poor condition

Action: Prepare all affected parts and re-stain with an appropriate preservative

i 6 - Low Risk (Finding 1)

Item: Ancillary Items - Litter Bin
Manufacturer: Not Identified

Risk Level: L - Low Risk
Surface: Grass



Finding: The paintwork on this item has been damaged or worn exposing the metal underneath which is rusting / corroding

Action: Treat affected areas and repaint